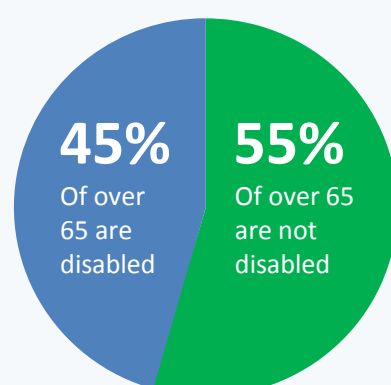


# DISABILITY IN THE UK

## KEY STATS

**1 in 5** PEOPLE  
HAVE A DISABILITY



**8.96** million people have a mobility impairment

### MOST COMMON IMPAIRMENTS



**Born without**

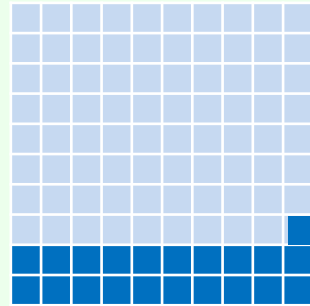
**ONLY 17%**

**Born with**

**THEIR DISABILITY**

## EDUCATION

**Working population**  
(16 – 64 years old)



**20.8%**  
(8.3 million)  
have a disability



Private sector

**34%**



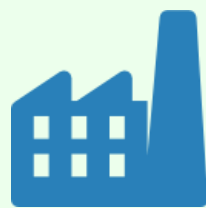
Public sector

**55%**

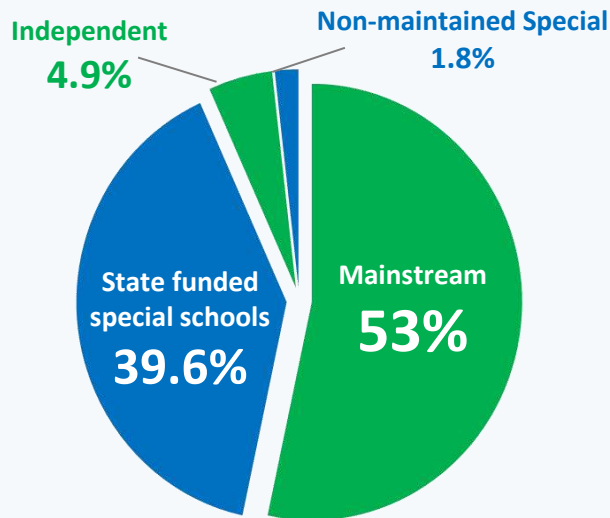
% think their workplace welcomes disabled people



Over **1/3** of disabled people who are not in work would like to work X

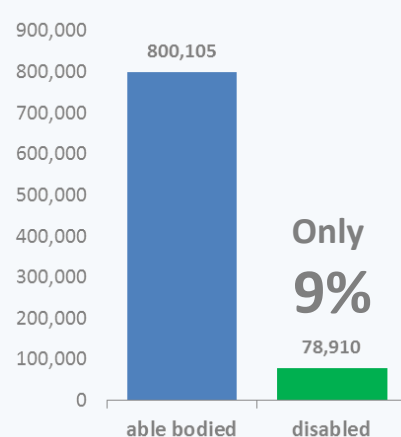


## EMPLOYMENT



% of schools with statements of SENs pupils

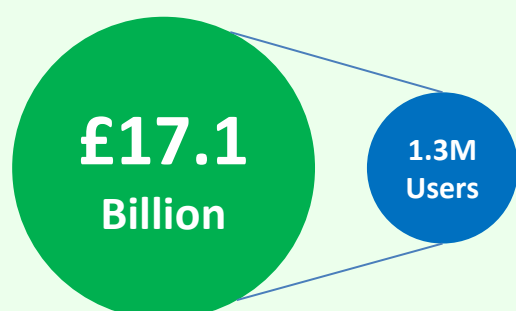
**No. of disabled students who entered higher education**



**1/3** of **NHS** users are disabled people



Local authority spend on adult social services



Only **8%** of disabled people



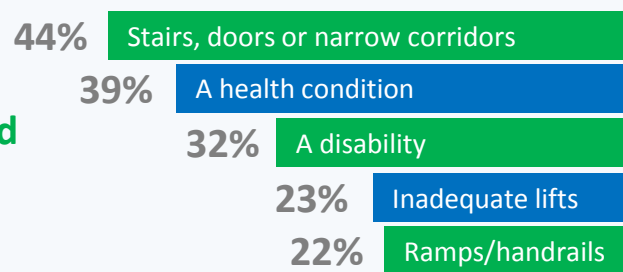
use a wheelchair

## SOCIAL HEALTH AND CARE

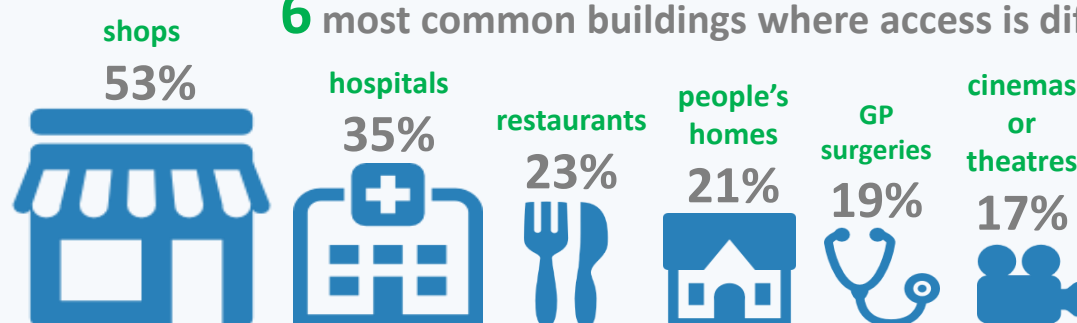


**29%**  
of adults have found some buildings inaccessible

Common barriers for adults with impairments

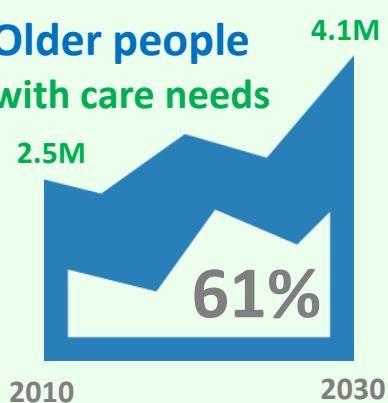


**6** most common buildings where access is difficult



## ACCESSIBILITY

**Older people with care needs**



**2022**

**40%**

Increase in older disabled people

**2002**

In 30 years, the number of people living with dementia will double to

**1.4 million**

## FUTURE

Sources:  
Papworth Trust Disability in the United Kingdom 2013 Facts & Figures:  
Family resource Survey 2011/12  
Institute for Public Policy Research article Work for Disabled People: [http://www.ippr.org/uploadedFiles/research/projects/Social\\_Policy/Work%20for%20disabled%20-%20Archilles\(1\).pdf](http://www.ippr.org/uploadedFiles/research/projects/Social_Policy/Work%20for%20disabled%20-%20Archilles(1).pdf)  
Northamptonshire County Council, Employment and disability services  
National Transport Survey 2006  
Family Resources Survey 2011/12: [https://www.gov.uk/government/uploads/system/uploads/attachment\\_data/file/206887/frs\\_2011\\_12\\_report.pdf](https://www.gov.uk/government/uploads/system/uploads/attachment_data/file/206887/frs_2011_12_report.pdf)  
The Annual Population Survey March 2013 retrieved from NOMIS: [www.nomisweb.co.uk](http://www.nomisweb.co.uk)  
Multiple Sclerosis Society Survey (undertaken March 2012), p.9 <http://www.mssociety.org.uk/sites/default/files/Fighting%20Back%20-%20MS%20Week%202012%20report%20-%20spreads.pdf>  
Labour Force Survey, Quarter 2, 2010 and Quarter 2, 2011  
ODI Life Opportunities Survey, Wave One 2009/11  
HESA statistics: [http://www.hesa.ac.uk/index.php?option=com\\_content&task=view&id=1897&Itemid=239](http://www.hesa.ac.uk/index.php?option=com_content&task=view&id=1897&Itemid=239)  
Special Educational Needs in England, January 2013: [https://www.gov.uk/government/uploads/system/uploads/attachment\\_data/file/225699/SFR30-2013\\_Text.pdf](https://www.gov.uk/government/uploads/system/uploads/attachment_data/file/225699/SFR30-2013_Text.pdf)  
Office for Disability Issues: <http://www.officefordisability.gov.uk/docs/wor/imp/accessible-information.pdf>  
Personal Social Service Expenditure and Unit Cost 2012/13 Provisional release. NHS information centre  
And a big thanks to Icons8 for the icons <http://icons8.com>

**Evacusafe**

innovation | manufacturing | training

9 Devonshire Business Park, Knights Park Road, Basingstoke, Hants. RG21 6XN. T: 01256 332723 W: [www.evacusafe.net](http://www.evacusafe.net) E: [info@evacusafe.net](mailto:info@evacusafe.net)